

# City of Livingston Growth Policy Virtual Community Meeting

July 1, 2020 | Time: 6:00 pm | Zoom

City of Livingston



*Incorporated 1889*

# Today's Purpose

1. What is a Growth Policy? – review
2. Survey – results
3. Community Profile – key facts & findings
4. Next steps & timeline
5. Give your feedback on future growth areas – online form
6. Ensure that you can ask questions

# Introductions

City of Livingston

Burton Planning Services

Applied Communications

# Consultant Team

## **Burton Planning Services**

Kimberly Burton, President

*Amelia Mansfield, Project Manager*

Jim Lenner

Brett Morris

Kevin Buettner

Anna van der Zwaag

Ruchi Agarwal

## **Applied Communications**

Kate McMahon



# What is a Growth Policy?

- Will serve as an **integral land use planning guidance tool** as the community, including the 2-mile extraterritorial jurisdiction, grows and develops.
- It is **essential** that the Growth Policy reflect the desires and needs of the community as well as the existing and future capacity of the city's infrastructure, economy, and natural environment.
- The Growth Policy will name the best locations for growth and **assist the City with ensuring** that development and investment occurs appropriately.

# What Will Livingston's Growth Policy Address?

Land Use

Population

Housing

Public Facilities

Policies, Regulations, and Other Measures

Transportation

Natural Resources

Local Services

Economy

Intergovernmental Coordination

# Progress to Date

Project kick-off and  
collection of  
information

(October -  
December 2019)

Community survey,  
community  
meeting, and goals  
and objectives

(December 2019 –  
March 2020)

Project growth  
trends, identify  
needs, and  
community  
meetings

(March – July 2020)

# Community Survey

December 12, 2019 – February 17, 2020

Survey Responses = 1,196

## Respondent Age

Under 18	.4%
18-24	3.0%
25-34	16.3%
35-44	21.8%
45-54	20.4%
55-64	21.30%
65+	15.75%

## Place of Residence

Within the city limits of Livingston	81.2%
In Park County outside of Livingston City Limits	24.7%
Elsewhere in Montana	3.3%
Out-of-state	3.9%

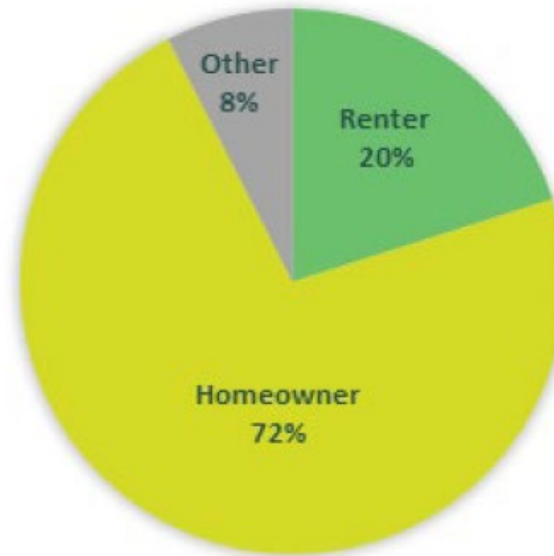




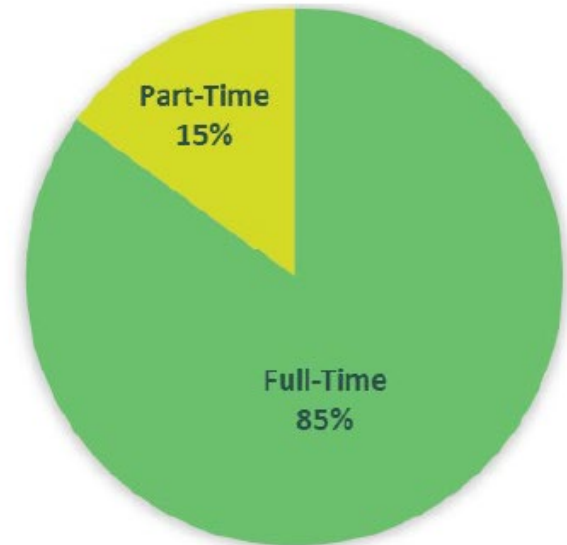
# Community Survey

Household Yearly Gross Income Income Range	%
<\$15,000	4.8%
\$15,000 - \$29,999	11.4%
\$30,000 - \$49,999	18.6%
\$50,000 - \$74,999	23.4%
\$75,000 - \$99,000	17.3%
\$100,000 - \$150,000	15.6%
Over \$150,000	8.8%

### Home Ownership



### Full-Time vs. Part-Time Residence



# Community Survey

## ECONOMIC DEVELOPMENT

### Most Popular Policies

- Attract skilled trade industries.
- Attract professional level jobs.
- Workforce development and training.
- Retention and expansion programs for existing businesses
- Buy local campaign.
- Redevelop railroad properties for economic development.
- Attract tech sector jobs.

# Community Survey

## LAND USE

### Most Popular Policies

- Regulate big-box stores (design standard, location, etc.).
- Limit the number of billboards.
- Discourage urban sprawl.
- Cluster homes to protect green space.

# Community Survey

## INFRASTRUCTURE

### Most Popular Policies

- The city should promote energy efficiency.
- New development should pay impact fees to help pay for upgrades to infrastructure.
- The city should promote resilient designs for infrastructure.
- The city should promote water conservation to reduce growth pressures on water and wastewater facilities.
- The city should plan for better broadband services.

# Community Survey

## TRANSPORTATION

### Most Popular Policies

- Build a new separated grade crossing on the west side of town.
- Design transportation improvements for people with disabilities.
- Design pedestrian-friendly transportation improvements.
- Invest in sidewalk and street improvements in older parts of town.

# Community Survey

## NATURAL RESOURCES

### Most Popular Policies

- Enact appropriate measures to protect ground water resources.
- Enact appropriate measures to protect water quality in the Yellowstone River.
- Protect natural areas such as floodplains, wetlands, wildlife habitat.
- Support clean-up of contaminated brownfields and superfund properties.
- Reduce non-point water pollution through best practices for stormwater management.
- Promote practices that result in good, healthy air quality.
- Discourage development in hazardous areas with steep slopes, poor soils, floodplain and other high-risk areas.
- Reduce waste and promote recycling in the city.
- Promote landscaped areas and preserve the urban forest.

# Community Survey

## HOUSING

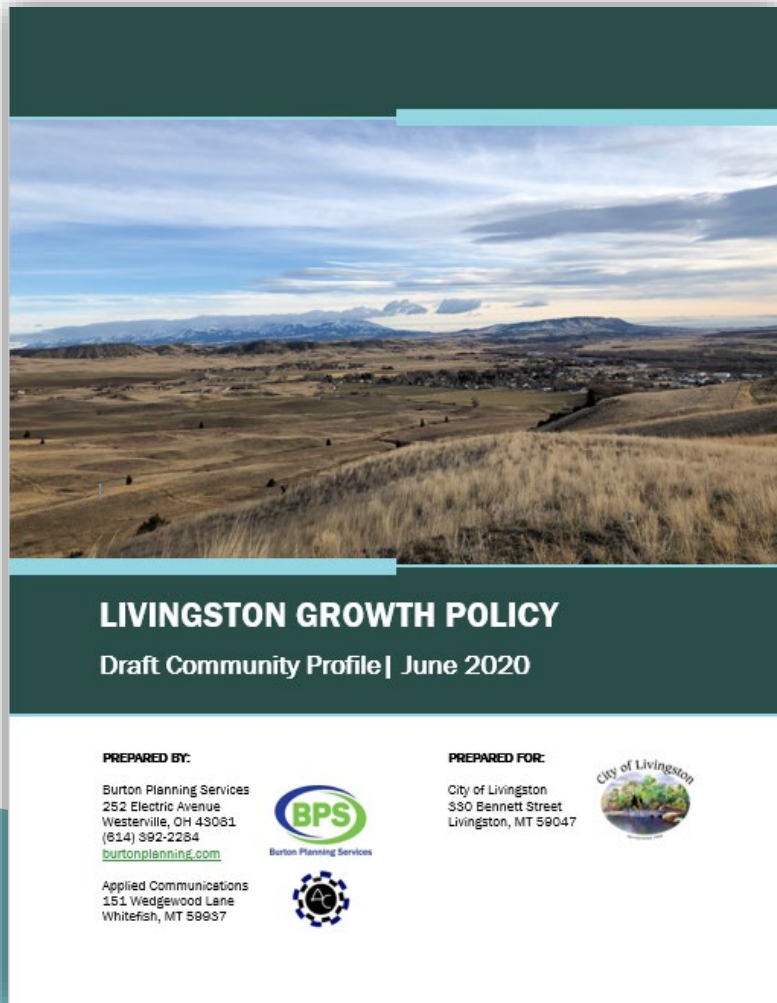
### Most Popular Programs

- Weatherization - energy conservation.
- Allow residential units above first floor commercial spaces.
- Down payment assistance for first time home buyers.

### Agree / Strongly Agree

- There is a shortage of rental units.
- It is difficult to recruit employees due to shortage of affordable housing units
- The cost to purchase a home is too high for the average worker.
- Rents are too high for the average worker.
- There are run-down homes in town that need repair.
- The city needs better regulations for short term rentals.

# Community Profile



## Topics:

- Population
- Land Use
- Natural Resources
- Housing
- Economy
- Local Services
- Transportation
- Public Facilities

## Purpose:

- Describe the existing conditions of Livingston
- Help to identify the community's needs as growth occurs in the future



# Community Profile

## Population:

- Growth Trends
- Aging Trends
- Disability
- Educational Attainment
- In-Out Migration
- Family Household Characteristics

Population is growing.  
Could exceed 9,400 people by 2040.

Median age of people living here: 38.8 years old

12.3% of the population has a disability.

96% of the population graduated high school.

Average of 2.03 people per household

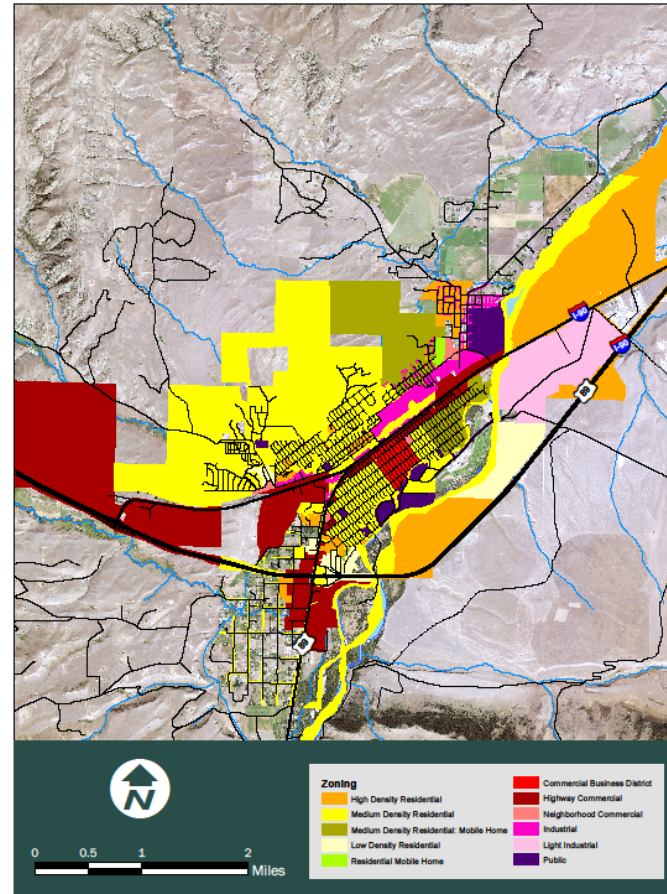
Over 1 in 4 households has a child under 18 years old.

# Community Profile

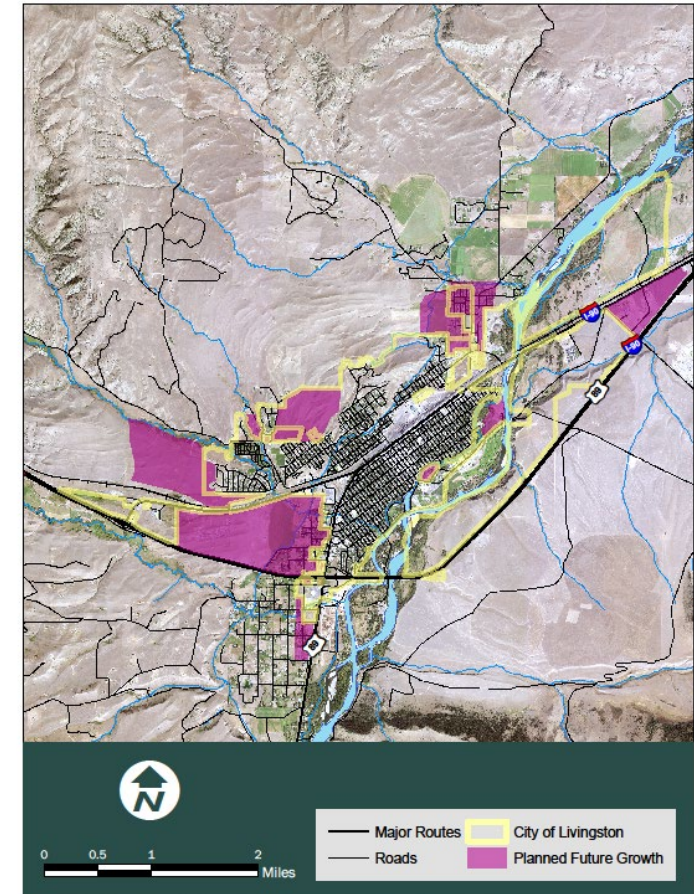
## Land Use:

- Geography
- Land Use Patterns
- Gateways
- Downtown
- Open Space
- Health Hazards

Zoning Map



Future Growth Map (2017 Growth Policy)



# Community Profile

## Natural Resources:

- Air Quality
- Water
- Wildlife / Conservation Lands
- Climate
- Soils
- Vegetation

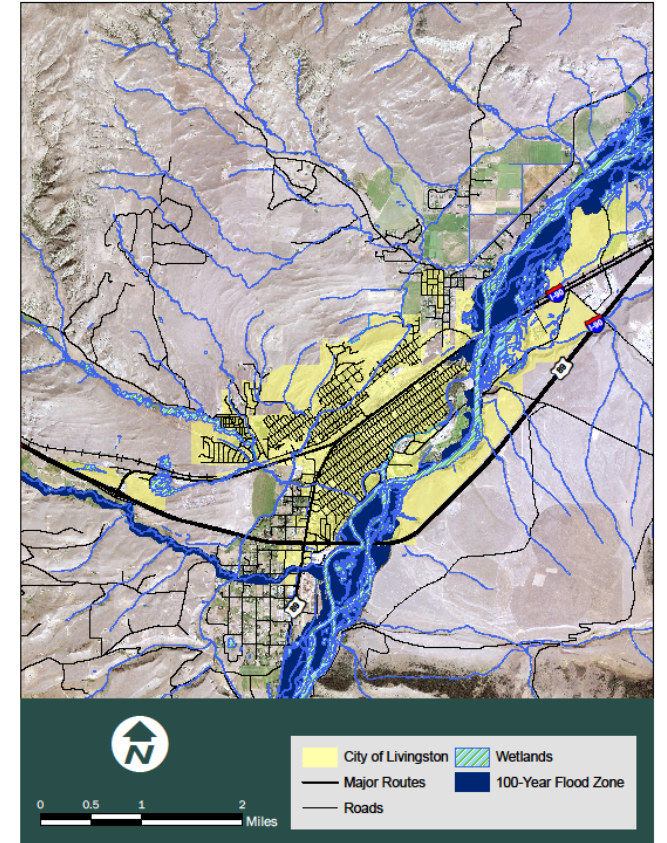
Smoke is an air quality concern (wildfires and open burning)

Abundant wildlife: game animals, non-game animals, trout and other fish

Invasive aquatic and plant species are a concern.

Expected temperature increases

Water Resources Map



# Community Profile

## Housing:

- Occupancy & Use
- Affordability
- Housing Assistance

### Housing Unit by Type

Type	Livingston		Park County	
	Number	Percent	Number	Percent
1 Unit (Attached or Detached)	2,838	74.7%	7,547	78.9%
2-9 units	510	13.5%	801	8.4%
10-19 units	105	2.8%	115	1.2%
20+ Units	183	4.8%	183	1.9%
Mobile Homes	161	4.2%	907	9.5%
Boat, RV, Van	0	0%	15	0.2%

### Housing Occupancy

Housing units, 2018	City of Livingston		Park County		United States	
	Number	Percent	Number	Percent	Number	Percent
Total Housing Units	3,797	100%	9,568	100%	136,384,292	100%
Owner Occupied	2,350	61.89%	5,314	55.5 %	76,444,810	56.1 %
Renter Occupied	1,271	33.4%	2,377	24.8 %	43,285,318	31.7 %
Vacant for Seasonal or Recreational Use	176	4.6%	1,877	19.6 %	16,654,164	12.2 %

# Community Profile

## Economy:

- Current Trends & Data
- Educational Attainment
- Employment by Sector
- Business Profile
- Tourism
- Catalytic Projects

## Economic Indicators

Economic Indicator	Livingston	Montana	Difference
Median Household Income (MHI)	\$44,660	\$55,328	-\$10,668 (-19.3%)
Poverty	14.1%	13%	+ 1.1%

Largest employment sector: service industry

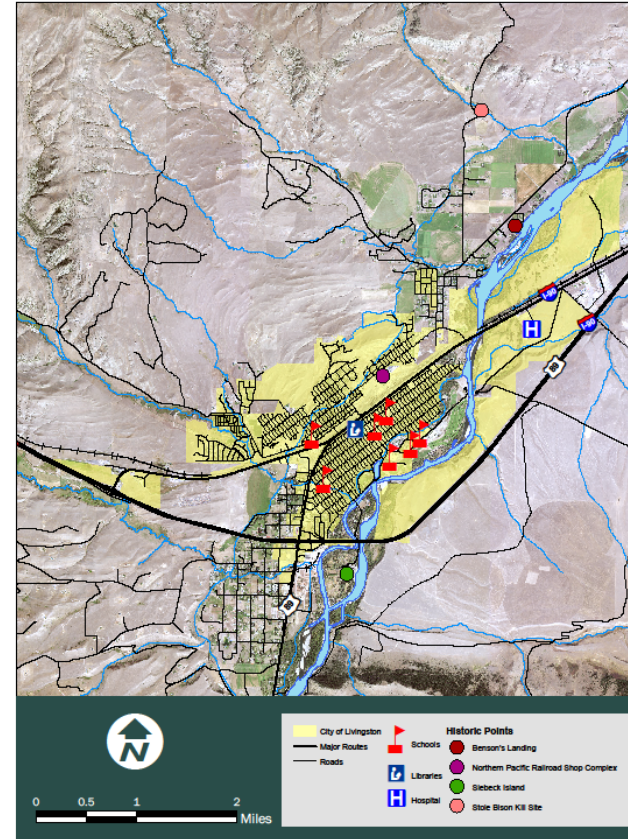
Overrepresented industries that rely on tourists: Food & beverage, gas stations, home furnishing stores, and auto parts & accessories

# Community Profile

## Local Services:

- Law Enforcement
- Health Providers
- Fire Protection & Medical Services
- Emergency Management & Hazard Mitigation
- School Facilities & Enrollment
- Library
- Historical & Cultural Sites

Local Services Map

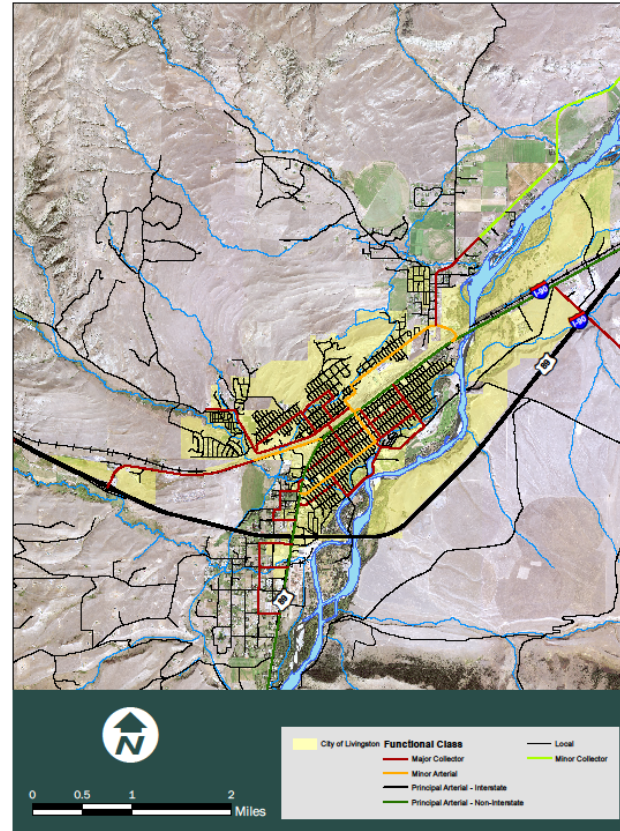


# Community Profile

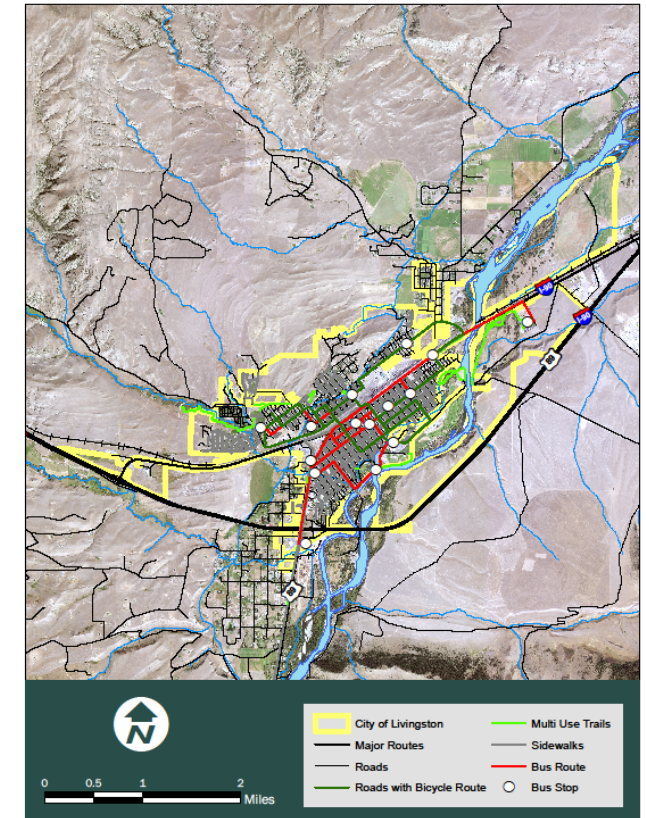
## Transportation:

- Road Network
- Traffic Counts
- Vehicle Trips/Miles Traveled
- Roadway Safety
- Commuting Patterns
- Transportation Choices
- Transit Information & Policies
- Active Transportation
- Rail
- Aviation
- Transportation & Land Use Relationship

Road Network Map



Transportation Choices Map



# Community Profile

## Public Facilities:

- Public Wastewater Facilities
- Water Supply
- Storm Water Management
- Parks – Recreation
- Energy Sources & Renewable Energy
- Solid Waste & Recycling
- Broadband Services

Updates to storm water network are needed.

Approximately 100 acres of parkland within the City

Ample electric and natural gas capacity for future growth.  
Renewable energy options.





# Community Profile

Check the website soon for the Community Profile!

<http://burtonplanning.com/LivingstonGrowthPolicy/>

# Visual Preference Survey Results

## Two ways to view the results:

- 1) Download the summary from the Zoom files tab
- 2) Visit the Growth Policy website at [http://burtonplanning.com/LivingstonGrowthPolicy/wp-content/uploads/2020/06/LivingstonGrowthPolicy\\_VisualPreferenceSurveyResults-2.pdf](http://burtonplanning.com/LivingstonGrowthPolicy/wp-content/uploads/2020/06/LivingstonGrowthPolicy_VisualPreferenceSurveyResults-2.pdf)

# Next Steps

Project growth trends, identify needs, and community meetings  
(March – July 2020)

Update Growth Policy  
(July – September 2020)

Finalize Growth Policy, and adoption  
(October 2020)

# We want to know more!

*What is your vision for Livingston's future growth?*

Share your opinions on future growth areas and the extra-territorial jurisdiction.

Fill out this online form by **7 pm on July 8:**

<https://www.surveymonkey.com/r/LivingstonGPMeeting>

**Other Questions?**

# Contact

**Faith Kinnick, Administrative Assistant**

City Manager's Office

110 S. B Street, Livingston, MT 49047

Phone: (406) 823 – 6002

Email: [fkinnick@livingstonmontana.org](mailto:fkinnick@livingstonmontana.org)