

SHELBY COUNTY HAZARD MITIGATION PLAN

Public Meeting #2 | June 7, 2022

- Please Sign In via SurveyMonkey:
<https://www.surveymonkey.com/r/ShelbyCore2SignIn>
- OR email bmorris@burtonplanning.com or KFryman@shelbyco.net with your name, email, phone, title, employer, and meeting attended.
- OR type your name, email, phone, title, employer into the chat
- OR text 740-262-4742 with your name, email, phone, title, employer

Introductions

- Shelby County EMA
- BPS Project Team  **BPS** Burton Planning Services
 - Kimberly Burton, P.E., AICP CTP, LEED AP ND, Project Manager
 - Kevin Buettner, Project Management, Plan Preparation
 - Brett Morris, Plan Preparation, Hazus, Mitigation Actions
- Core Planning Committee Members



Reminder

- Virtual Sign-In
 - Please Sign In via SurveyMonkey:
<https://www.surveymonkey.com/r/ShelbyCore2SignIn>
 - OR email bmorris@burtonplanning.com or KFryman@shelbyco.net with your name, email, phone, title, employer, and meeting attended.
 - OR type your name, email, phone, title, employer into the chat-
 - OR text 740-262-4742 with your name, email, phone, title, employer
- Questions – type into chat
- Surveys - physical copies to print, fillable PDFs, and online surveys
 - Available on the website at: <https://burtonplanning.com/shelby-hmp/>

Introductions

- Why are we here today?
 - *Update the 2017 Shelby County Hazard Mitigation Plan*
 - Hazard mitigation overview
 - Progress update
 - Gather stakeholder input
 - Next steps

A large, multi-arched stone bridge, possibly a viaduct, spans across the frame. The bridge is made of light-colored stone or concrete and features a series of arches. The background shows a clear sky with a faint rainbow and some trees with autumn foliage. The text "Process and Schedule" is overlaid on the lower right portion of the image.

Process and Schedule

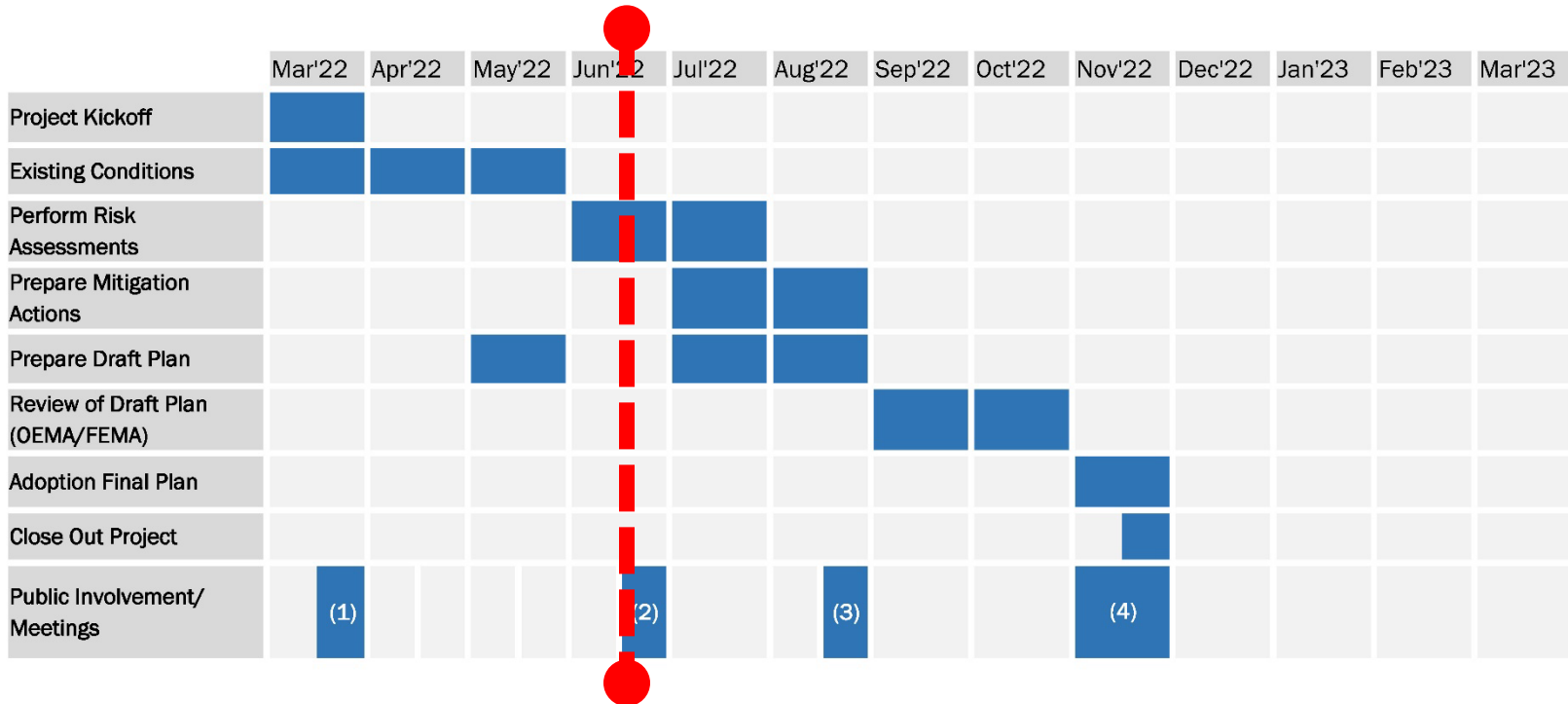
Process & Schedule

- Completed and Upcoming Tasks:
 - ✓ Gathered critical facilities information
 - ✓ Gathered GIS base mapping
 - ✓ Gathered repetitive loss property information
 - ✓ Summarized features and demographics of County and communities
 - ✓ Gathered historical information on previous hazard events
 - ✓ Identify past and potential hazards to evaluate in this plan update
 - ✓ Identify mitigation actions from the previous plan that need to be updated
 - Receive feed back today on new mitigation actions

Process & Schedule

- Hazard Mitigation Planning Process:
 - ✓ Milestone 1: Project Kickoff Announcement; Gather Data For Existing Conditions/Demographics
 - ✓ Milestone 2: Hold Planning Meeting #1
 - ✓ Milestone 3: Perform Risk Assessments & Vulnerability Analyses; Develop Mitigation Actions
 - Milestone 4: Hold Planning Meeting #2
 - Milestone 5: Prepare Draft Plan
 - Milestone 6: Conduct Reviews Of Draft Plan
 - Milestone 7: Adoption Of Plan
 - Milestone 8: Closeout Project

Process & Schedule



• Important Dates

- ✓ Project Kickoff – March 2022 (Sent out by County EMA)
- ✓ Planning Meeting #1 – April 27, 2022
- ✓ Planning Meeting #2 – June 7, 2022
- Reviews of draft plan – September/October 2022
- Adoption of plan – November 2022

A large, multi-arched stone bridge, likely the Nashville River Bridge, is the background of the slide. The bridge is made of light-colored stone and has several large arches. The scene is set in a park-like area with trees and a grassy field in the foreground. The text "Stakeholder & Public Participation" is overlaid on the image.

Stakeholder & Public Participation

Your Role

- Overview
 - Provide local knowledge & data as needed, including history, demographics, spatial information.
 - Help identify potential hazards based on previous experience & prioritize based on risk.
 - Help develop new mitigation actions, determine status of previous mitigation actions & prioritize
 - Provide feedback on draft plan
 - Participate in both planning meetings
 - Assist in plan adoption for representative local jurisdiction

Your Role

Today:

1. Project Website
2. Complete surveys
3. General feedback



Action Items

1. Project Website: <https://burtonplanning.com/shelby-hmp/>



The screenshot shows the website for Burton Planning Services, specifically the page for the Shelby County Hazard Mitigation Plan. The website has a navigation menu with links for Home, Background, Services, Projects, Key Staff, and Contact & Careers. The main heading is "Shelby County Hazard Mitigation Plan". Below the heading is a logo for Shelby County, featuring a building and the text "SHELBY COUNTY EST. 1819 TOGETHER WE CAN!". To the right of the logo is a paragraph of text explaining that Shelby County was awarded a Pre-Disaster Mitigation Grant to update its Hazard Mitigation Plan, and that municipalities, police and fire departments, schools, businesses, and the general public may receive funding for any mitigation strategy found in the approved and adopted plan update. Below this text is another paragraph stating that the website will remain up-to-date with information regarding the planning process and will provide links to presentations, live meetings, surveys, and more. At the bottom of the page is a navigation bar with four tabs: "About the Plan", "Attend a Meeting", "Meeting 1 Materials", and "Meeting 2 Materials". The "Meeting 1 Materials" tab is currently selected. Below the navigation bar is a section titled "Meeting 1 Materials: April 27, 2022" which contains a list of six items: 1. Agenda, 2. Presentation, 3. Hazard Mitigation Plan Informational Handout, 4. Hazards Overview, 5. Hazard Priorities Survey - This survey asks you to consider the hazards identified in the 2017 Plan and determine if they are still relevant. It includes sub-links for "Take Online via SurveyMonkey" and "Download & Complete as a PDF". 6. Previous Mitigation Action Survey - This survey asks communities to reflect on the projects they wanted included in the 2017 Hazard Mitigation Plan. Communities are asked to provide the status of each mitigation action and suggest any new actions they would like included in this plan update. It includes sub-links for "Take Online via SurveyMonkey" and "Download & Complete as a PDF" (Please note: Only complete the page for your community. You do not need to complete all pages in this PDF).

BPS Burton Planning Services

Home Background Services Projects Key Staff Contact & Careers

Shelby County Hazard Mitigation Plan



Shelby County was recently awarded a Pre-Disaster Mitigation Grant to update the County's Hazard Mitigation Plan. This update is required by FEMA every five (5) years to remain eligible for funding for projects. Municipalities, police and fire departments, schools, businesses, and the general public may receive funding for any mitigation strategy found in the approved and adopted plan update.

This website will remain up-to-date with information regarding the Shelby County Hazard Mitigation Planning process. This website will provide links to presentations, live meetings, surveys, and more. Please check back often for updates.

About the Plan Attend a Meeting **Meeting 1 Materials** Meeting 2 Materials

Meeting 1 Materials: April 27, 2022

1. [Agenda](#)
2. [Presentation](#)
3. [Hazard Mitigation Plan Informational Handout](#)
4. [Hazards Overview](#)
5. **Hazard Priorities Survey** - This survey asks you to consider the hazards identified in the 2017 Plan and determine if they are still relevant.
 - [Take Online via SurveyMonkey](#)
 - [Download & Complete as a PDF](#)
6. **Previous Mitigation Action Survey** - This survey asks communities to reflect on the projects they wanted included in the 2017 Hazard Mitigation Plan. Communities are asked to provide the status of each mitigation action and suggest any new actions they would like included in this plan update.
 - [Take Online via SurveyMonkey](#)
 - [Download & Complete as a PDF](#) (Please note: Only complete the page for your community. You do not need to complete all pages in this PDF).

Action Items

2. Complete Surveys

- Survey #2: Previous mitigation actions status
 - Update the status, remarks, and ratings.



MITIGATION ACTIONS SCORING MATRIX

Purpose

As part of the hazard mitigation planning process, communities are asked to identify specific projects and activities (mitigation actions) that will help their communities achieve the long-term outcomes related to specific hazards. The status of each previously identified mitigation action is reviewed during the Hazard Mitigation Planning Process to determine the progress being made towards the County's hazard-specific goals. New mitigation projects and actions are also identified in this process.

The purpose of the Mitigation Actions Scoring Matrix is to determine which mitigation actions are relevant to each of the communities within Shelby County and to develop a corresponding action plan that describes how the mitigation actions will be implemented. Scores collected from this Mitigation Actions Scoring Matrix will be used to decide how the mitigation actions will be prioritized, administered, and incorporated into Shelby County's existing planning mechanisms.

Instructions

To complete this matrix, please review each proposed mitigation action and indicate if it is applicable to your jurisdiction. If it is applicable, score it from 1-5 for each category described below. For each category, a rating of 1 is the lowest score, a rating of 3 is neutral/unsure, and a rating of 5 is the highest score.

1. **Applicable to your jurisdiction?** - Write **Yes** or **No** - to indicate if you think this mitigation action is applicable to your community or jurisdiction. If Yes, fill out the remaining columns; if No, do not fill out the remaining columns.
2. **Cost Effective** - Rank 1 - 5 - the cost effectiveness of each proposed mitigation action, with 5 being the most cost effective and 1 being the least cost effective.
3. **Technically Feasible** - Rank 1 - 5 - the feasibility of each proposed mitigation action, with 5 being the most feasible and 1 being the least feasible.
4. **Environmentally Sound** - Rank 1 - 5 - the proposed mitigation action in terms of how environmentally sound it seems, with 5 being the most sound and 1 being the least sound.
5. **Immediate Need** - Rank 1 - 5 - whether each proposed mitigation action is needed immediately, with 5 being the most immediate need and 1 being not an immediate need.
6. **Risk Reduction** - Rank 1 - 5 - the proposed mitigation action on the extent to which it will reduce the total risk of the associated hazard, with 5 being the greatest contribution to risk reduction and 1 being the least contribution to risk reduction.

#	Mitigation Action	Status	Applicable to jurisdiction? (Y/N)	Cost Effective (1-5)	Technically Feasible (1-5)	Environmentally Sound (1-5)	Immediate Need (1-5)	Risk Reduction (1-5)
<i>Dam Failure</i>								
1	Obtain inundation mapping for at least all high hazard potential dams in the County.	New						

A large, multi-arched stone bridge, likely the Nashville Centennial Bridge, is the background of the slide. The bridge is made of light-colored stone and has several large arches. The scene is set in a park-like area with trees and grass. The text "Next Steps" is overlaid on the right side of the image.

Next Steps

Next Steps

- All Participating Jurisdictions & General Public:
 - Complete the goals, hazard priority, and existing mitigation action surveys
- Project Team
 - Finalize critical facilities lists
 - Develop draft plan
 - Prepare for public comment period

Reminder

- Virtual Sign-In
 - Please Sign In via SurveyMonkey:
<https://www.surveymonkey.com/r/ShelbyCore2SignIn>
 - OR email bmorris@burtonplanning.com or KFryman@shelbyco.net with your name, email, phone, title, employer, and meeting attended.
 - OR type your name, email, phone, title, employer into the chat-
 - OR text 740-262-4742 with your name, email, phone, title, employer
- Questions – type into chat
- Surveys - physical copies to print, fillable PDFs, and online surveys
 - Available on the website at: <https://burtonplanning.com/shelby-hmp/>

QUESTIONS?

Shelby County Hazard Mitigation Plan

- **Public Meeting #2 | June 7, 2022**

Contact Information:

Kristy Fryman

Director, Shelby County EMA

Work: (937) 492 - 5635

Email: kfryman@shelbyco.net

Brett Morris

Resiliency Planner, Burton Planning Services

Main: (614) 392 - 2284

Email: bmorris@burtonplanning.com